

SLINT

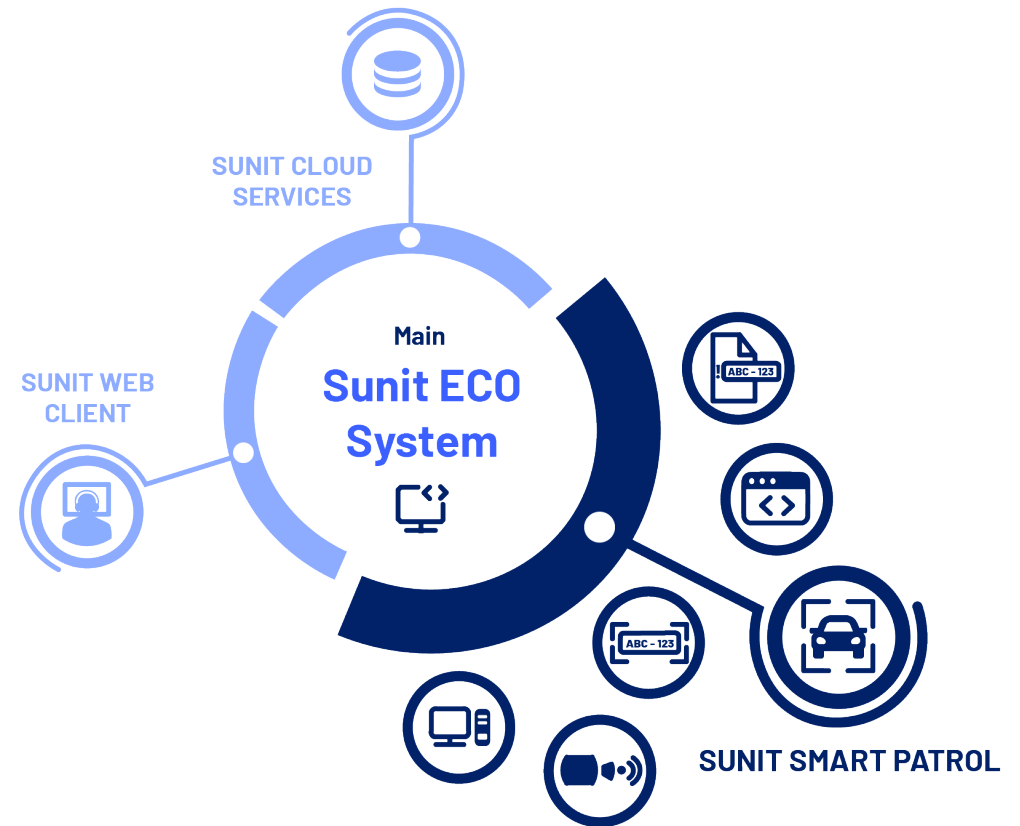
Smart Patrol

Intelligenced vehicles in
Critical Communication



Table of contents

Sunit Smart Patrol	3
System Components	4
Features	7
Additional Features	8
System Description	11
Benefits – Why choose Sunit Smart Patrol	12



Sunit Smart Patrol - Introduction

Sunit Smart Patrol is a comprehensive solution for modern traffic enforcement. It combines in-vehicle computing and advanced software. The system enables simultaneous license plate reading and speed detection. Sunit Smart Patrol automates the ticketing process by collecting the necessary evidence for issuing a ticket, which can then be sent to back office. The system, securely and fix-mounted installed in the vehicle, is part of the Sunit ECO system, allowing the police to focus on what matters the most –ensuring safety and enforcing the law.

System Components

Sunit FX Computer and FX12 Display

The Sunit FX Computer, paired with the 12HD Display, is seamless integration into authority vehicles, providing clear visuals and an intuitive interface that maximizes operational efficiency. Designed with the safety of officers in mind, this system is securely mounted to withstand the rigors of on-road use, ensuring it remains firmly in place even in the event of an accident. This robust construction not only guarantees reliable performance under all conditions but also enhances officer safety by preventing equipment displacement during sudden impacts, making it an indispensable tool for modern policing.

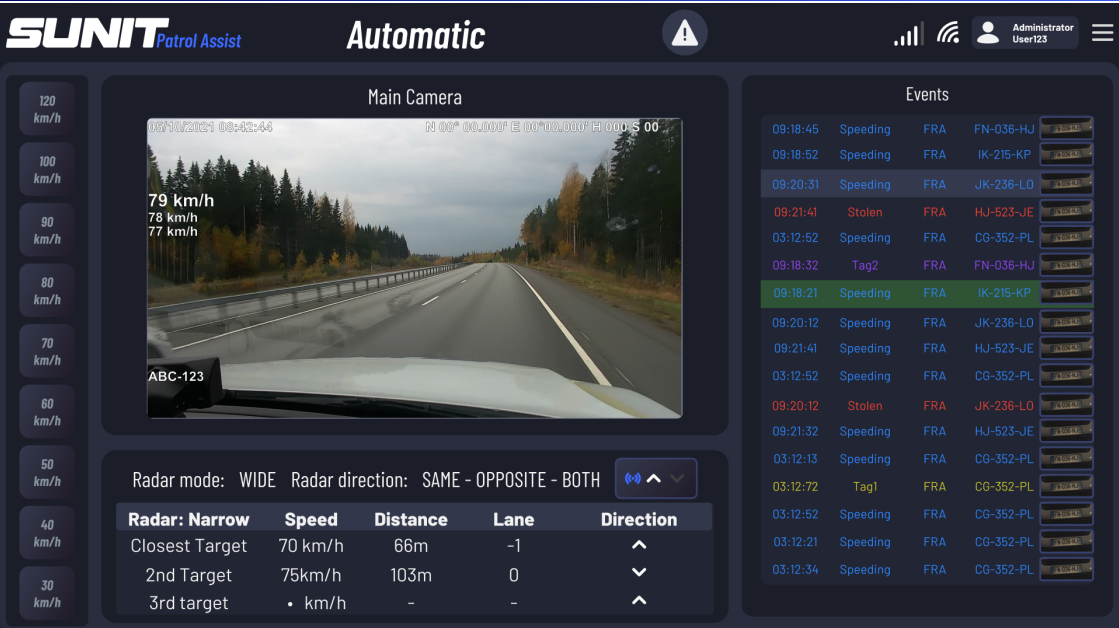
Smart Radar and 4K Cameras

Leverage cutting-edge technology with our Smart Radar and 4K Cameras, delivering unparalleled accuracy and real-time traffic monitoring for precise enforcement, ensuring every detail is captured with stunning clarity.

Sunit Smart Patrol Software

Equip your enforcement team with Sunit Patrol Smart Software, a lightweight and customizable solution that streamlines traffic enforcement. By automating routine tasks, it reduces manual work and minimizes errors, allowing officers to focus on their primary responsibilities. Designed to adapt to different needs, this software enhances efficiency and effectiveness in daily operations.





Features

Automatic Speeding Enforcement

The Sunit Smart Patrol system automatically monitors traffic and captures data on speeding vehicles while the vehicle is in use. This automation reduces the need for manual enforcement, freeing up police resources for more critical tasks and significantly enhancing road safety.

Evidence Collection and Formation

The Sunit system efficiently collects necessary data, compiling it into comprehensive, ready-to-use evidence for issuing fines. This process ensures that all actions are legally sound and easily accessible for enforcement purposes.

Enhanced Vehicle Tracking: Sunit HitList

The Sunit HitList integration provides targeted tracking tracking of specific vehicles. This means that only selected vehicles require the officer's attention, optimizing resource usage and improving enforcement targeting.

Automated Speed Limit Recognition

Automated Speed Limit Recognition (**ASLR**) using GPS technology enhances road safety by leveraging the vehicle's GPS system to determine speed limits based on its current location. By cross-referencing real-time positional data with a comprehensive database of speed limits, the system accurately identifies the applicable limits even when physical signs are absent or obscured.

Main or Background System Integration

The Smart Patrol System is designed with the versatility to function either as a primary operational platform or as a supportive background system. When operating as the main system, it manages core patrol operations and provides a direct interface for users. Alternatively, it can seamlessly run in the background, augmenting existing systems with additional data processing and support, all while maintaining established workflows. This flexibility ensures smooth integration and adaptability across various operational needs, enhancing the system's overall efficiency in diverse deployment scenarios.

Moreover, the Smart Patrol System's API can be utilized to enable its background functionality, allowing it to integrate smoothly with other systems and provide enhanced capabilities without requiring a complete overhaul of existing infrastructures.

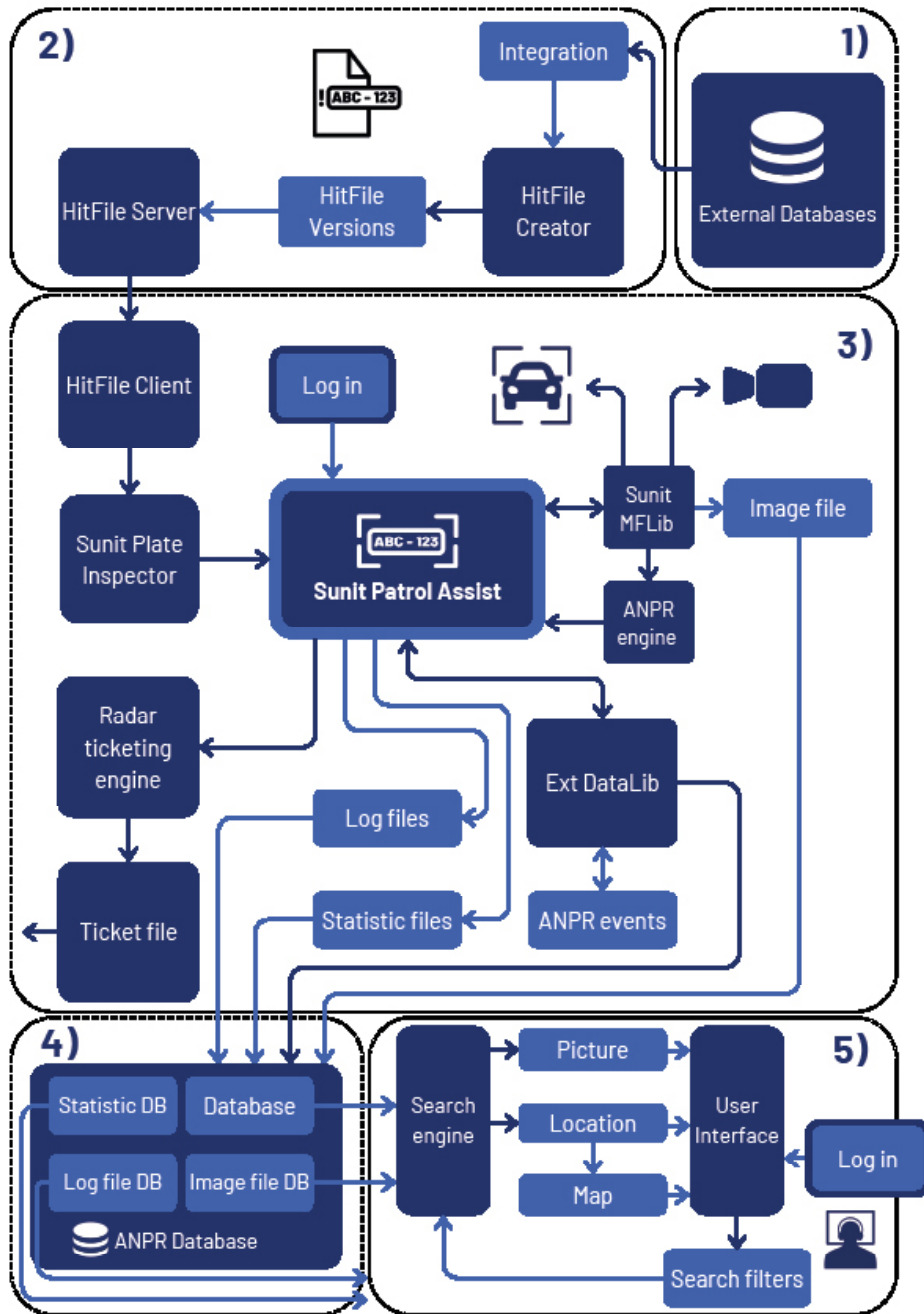


Additional features

Additional features include Sunit Live, WEB client and external HitList integration:

Sunit Live: The Sunit Live gives the opportunity to stream live video from the vehicle to the command center, enabling real-time coordination and the sharing of video with other nearby vehicles and receivers. This feature enhances overall communication and teamwork, ensuring a more synchronized and efficient response.

Sunit WEB client: The WEB client empowers command center operators to review and analyze real-time video streams, stored data, and event reports remotely. This capability facilitates effective monitoring, decision-making, and rapid response to situations, improving operational efficiency and law enforcement accuracy. Additionally, the WEB client provides a user-friendly interface, making it easier to manage and share complex information across different stakeholders.



System description



1) External Databases

Users can connect external databases to the Smart Patrol system, from which HitFile generates a list (HitList) based on the data.



2) Integrated Sunit HitList

The software includes a separate server-based Sunit HitList, which allows for the comparison of identified license plates against the list created from the external database. Sunit HitList compares the identified license plates with the data from the external database and alerts possible matches (hits) using audio signals and colour codes. The update interval for the HitList can be adjusted according to the user's needs.



3) Sunit Patrol Assist

The Sunit Patrol Assist system is the visible part of the Smart Patrol hardware for the vehicle's driver. Smart Patrol automatically identifies license plates, monitors speeds, and generates evidence of possible violations for ticketing purposes.



4) Data Storage and Live Video

Smart Patrol continuously records video and captures images of identified license plates. The collected data can be stored using the Sunit Database Services add-on, which enables data storage in a database. By logging into the Sunit Database Service, users can view images and videos recorded by the Smart Patrol hardware. Smart Patrol is also capable of streaming live video from the vehicle, allowing, for example, police command centre staff to monitor the mission in real-time.



5) WEB Client

Sunit WEB enables real-time monitoring and viewing of stored images and videos. WEB also allows the user to view live footage from the patrol cars and track their location in real time.

SUNIT

Sunit Oy

Taitoraitti 1
FI - 874 00 KAJAANI
FINLAND
V.A.T.: FI-10549603

INFO@SUNIT.FI
+358 (0)8 632 600

www.sunit.fi



CERTIFIED
ISO 9001

